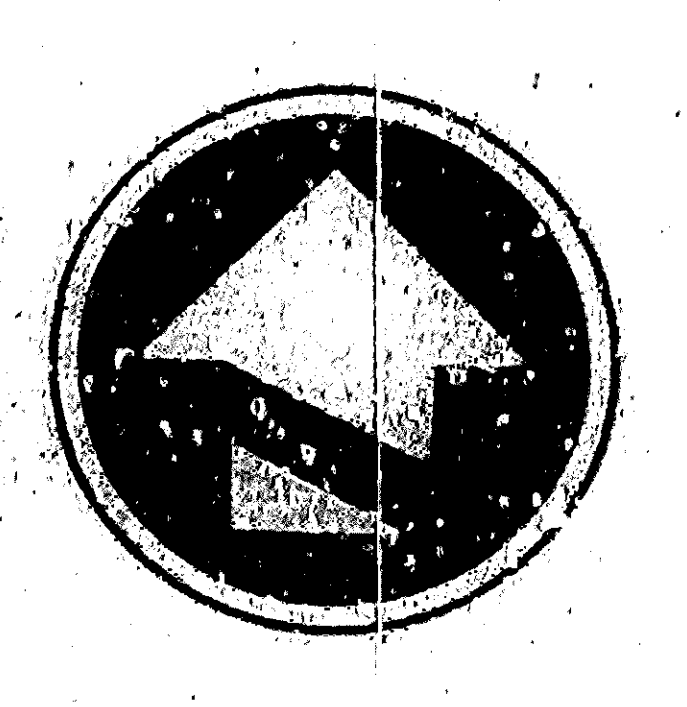
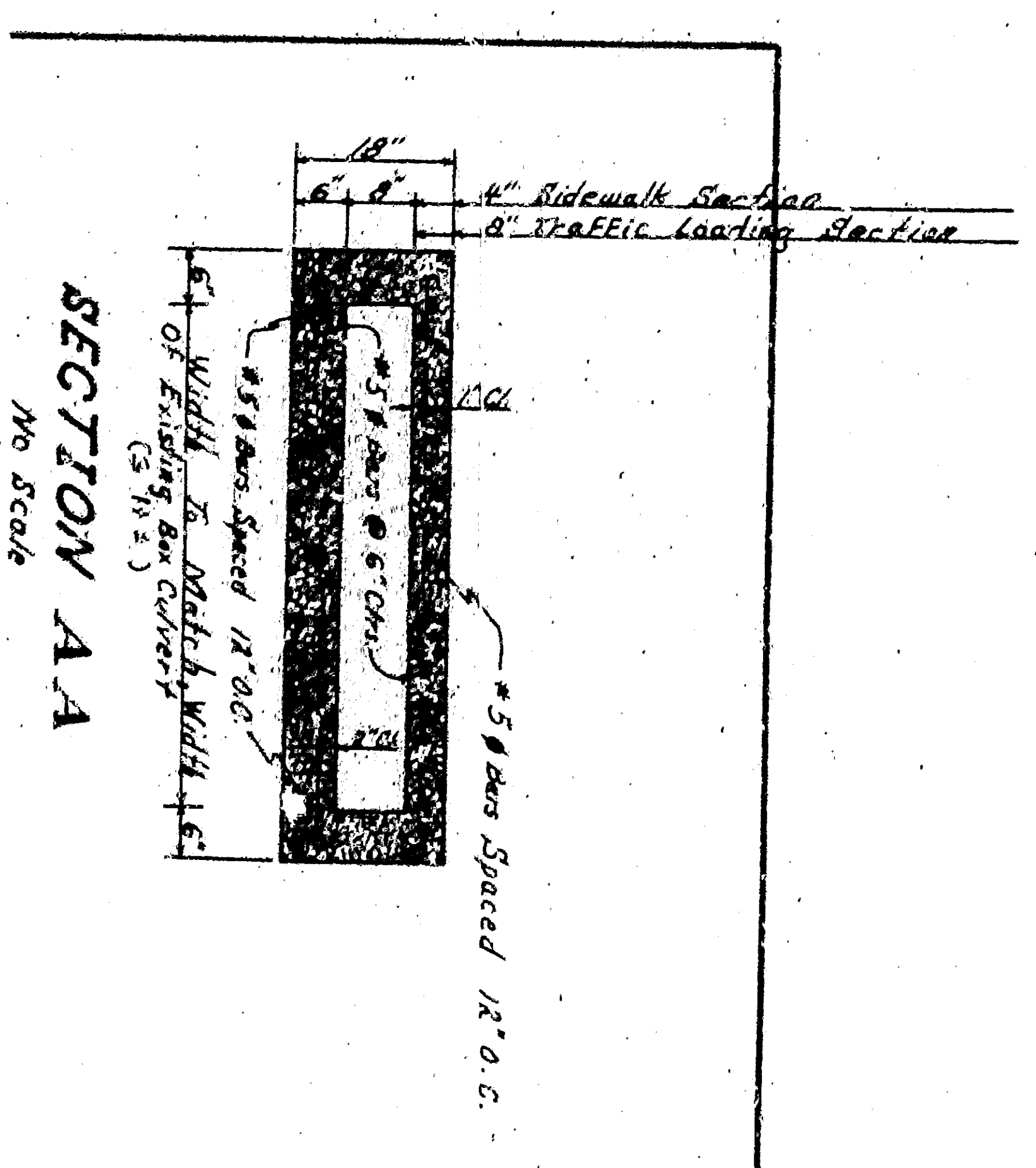
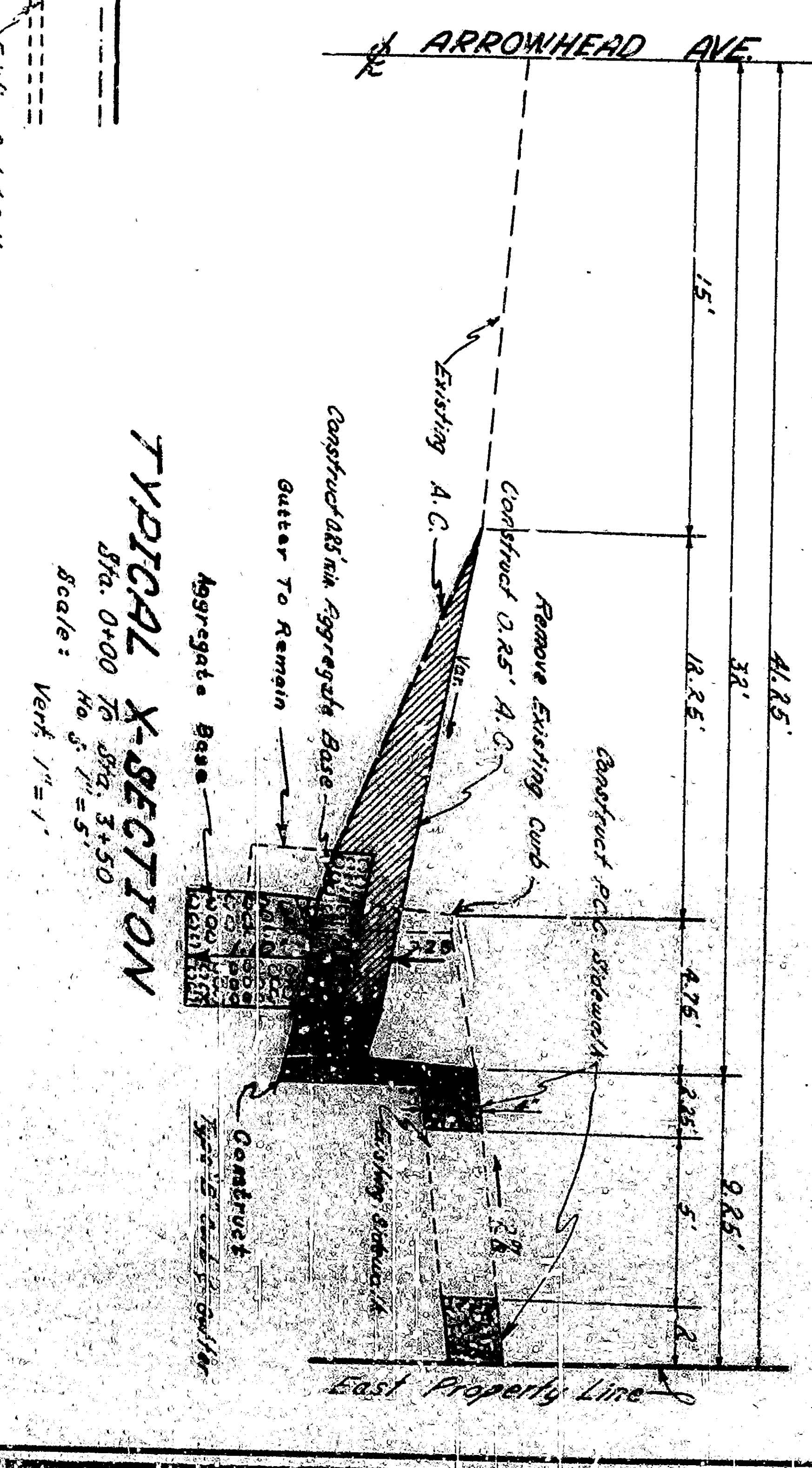
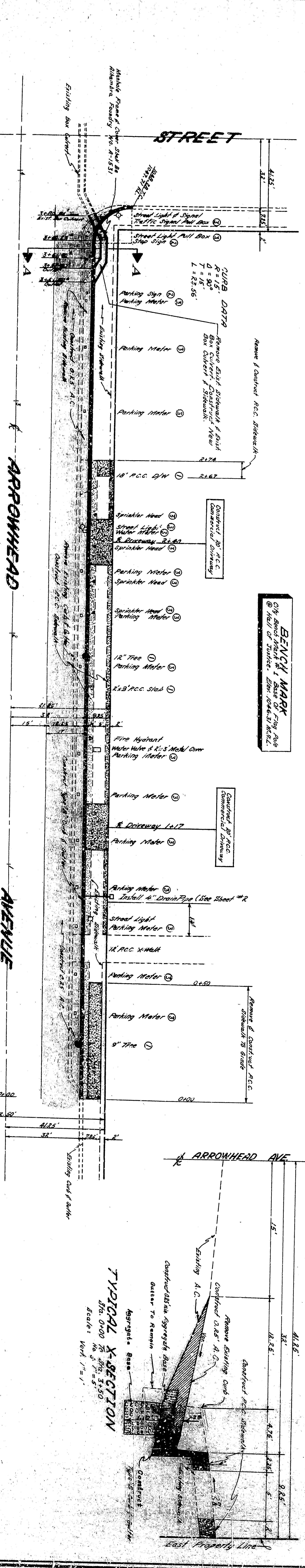
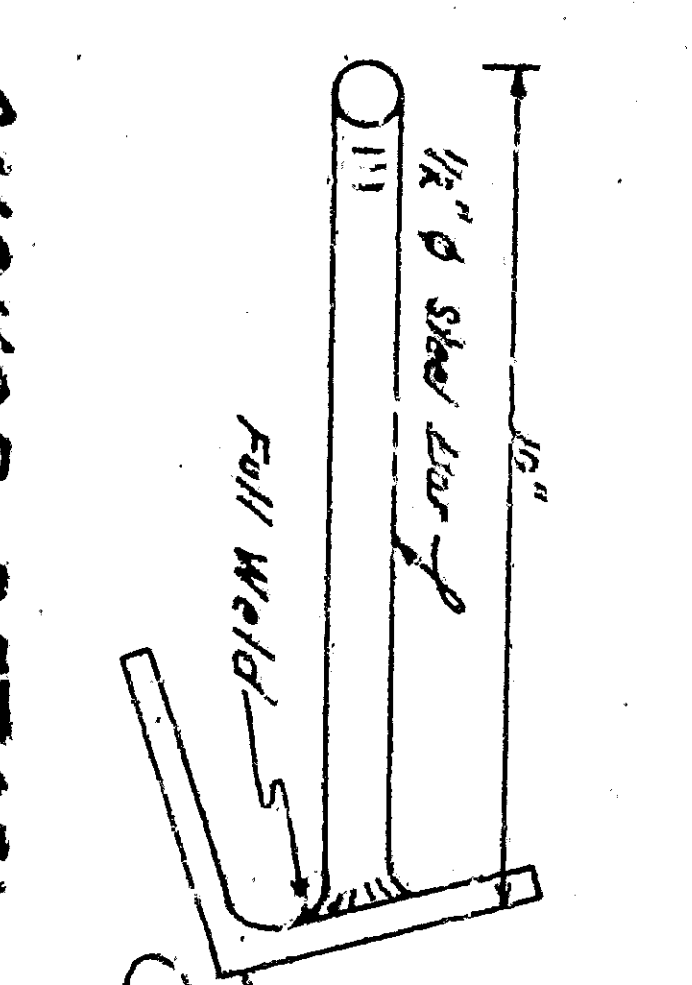


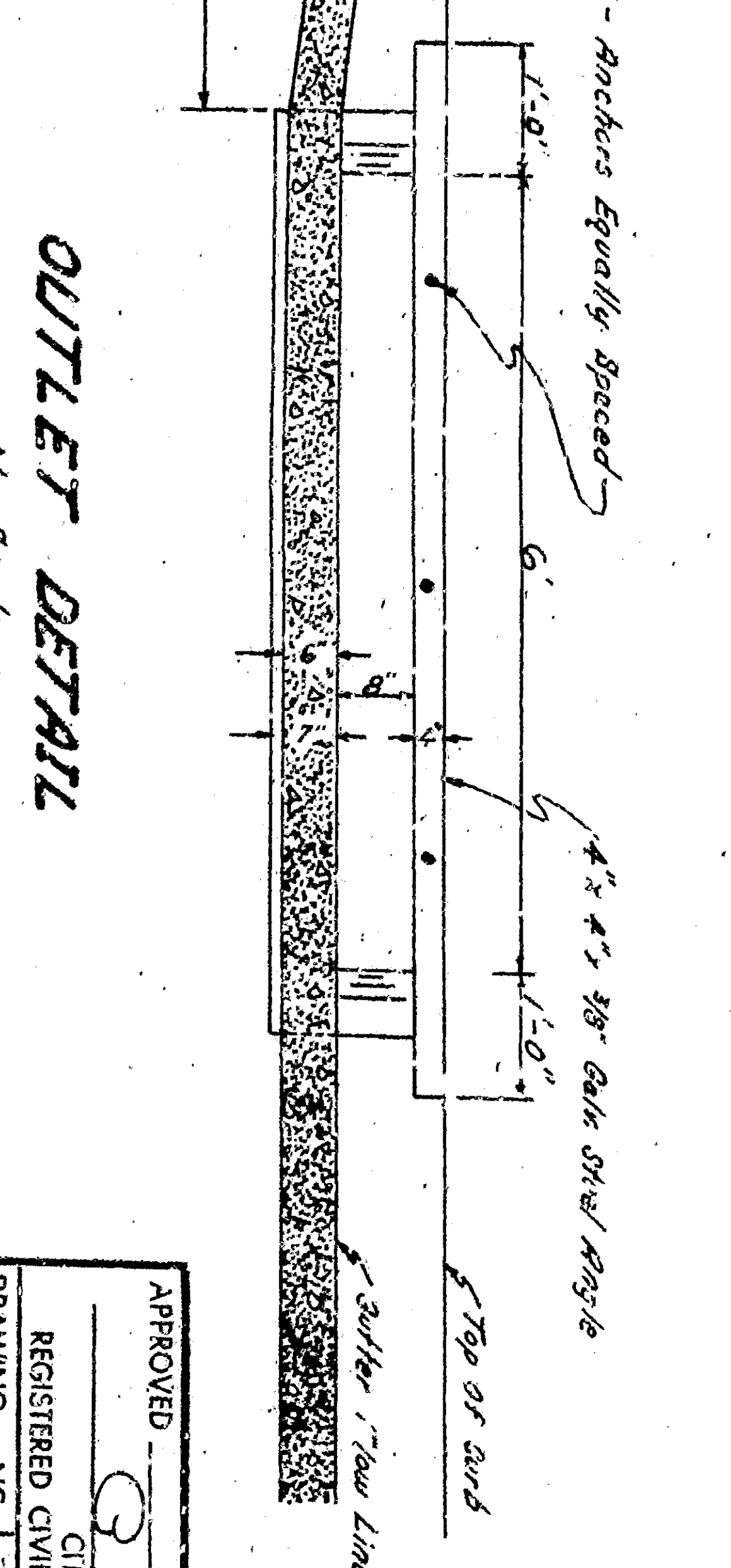
- GENERAL NOTES**
- All work shall be done in accordance with the specifications of the City of San Bernardino.
  - Work shall be done in accordance with the specifications of the City of San Bernardino.
  - Work shall be done in accordance with the specifications of the City of San Bernardino.
  - Work shall be done in accordance with the specifications of the City of San Bernardino.
  - Work shall be done in accordance with the specifications of the City of San Bernardino.
  - Work shall be done in accordance with the specifications of the City of San Bernardino.
  - Work shall be done in accordance with the specifications of the City of San Bernardino.
  - Work shall be done in accordance with the specifications of the City of San Bernardino.
  - Work shall be done in accordance with the specifications of the City of San Bernardino.
  - Work shall be done in accordance with the specifications of the City of San Bernardino.



**PLAN**  
Scale: 1"=20'



**ANCHOR DETAIL**  
No Scale

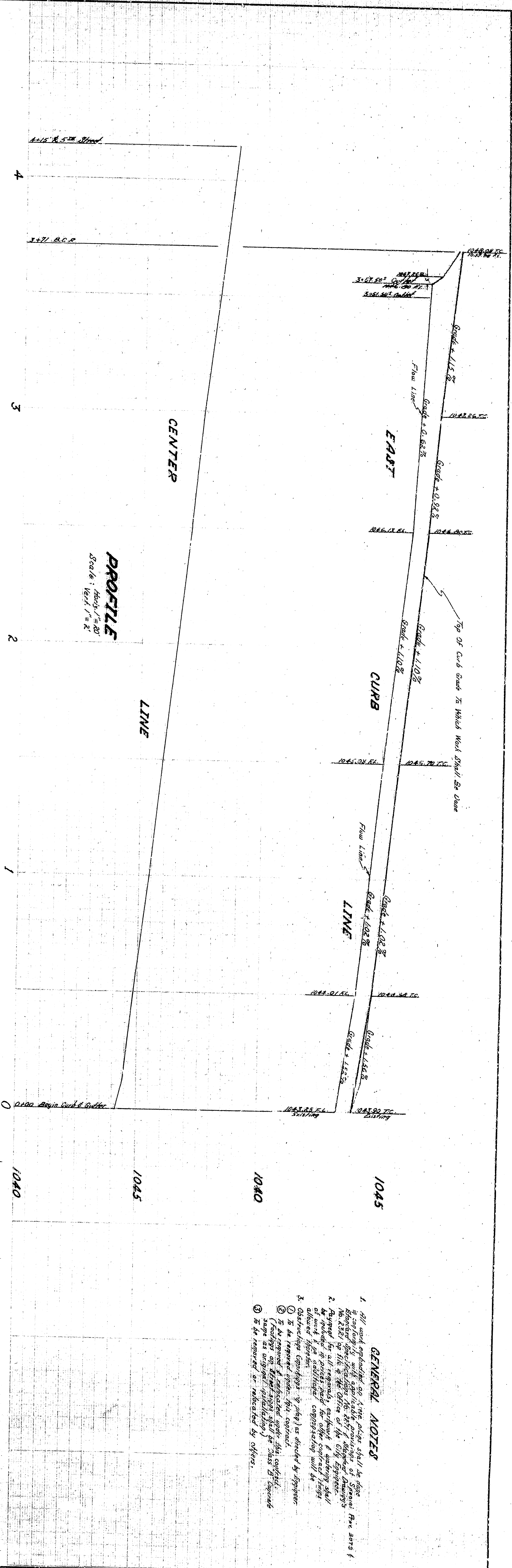


**OUTLET DETAIL**  
No Scale

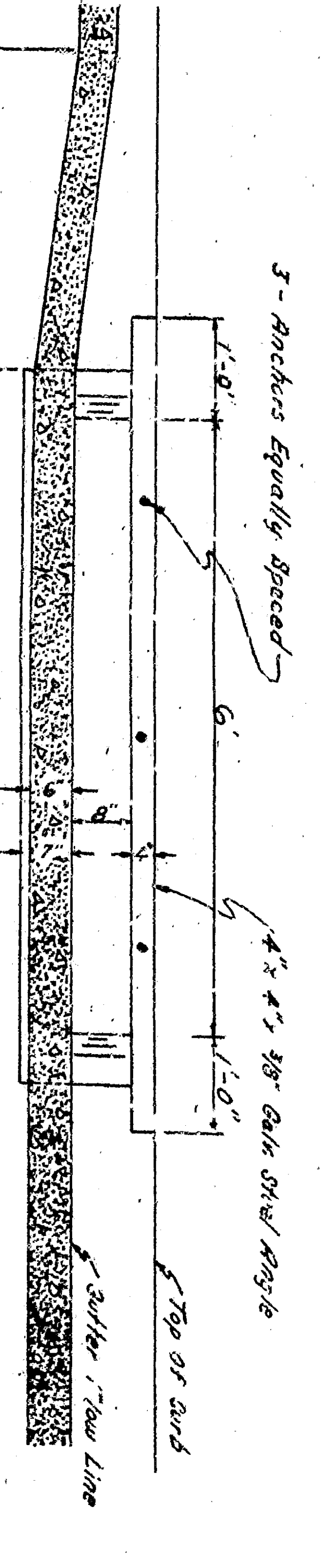
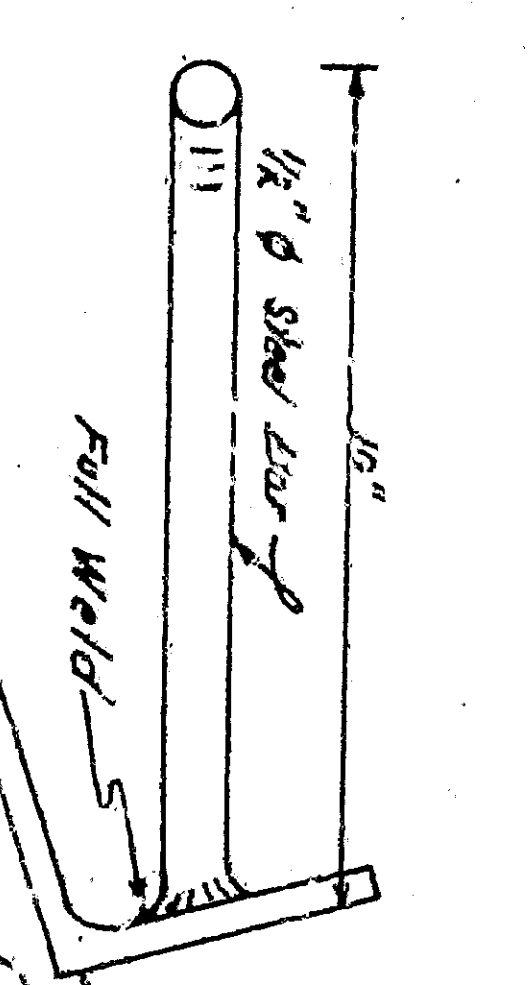
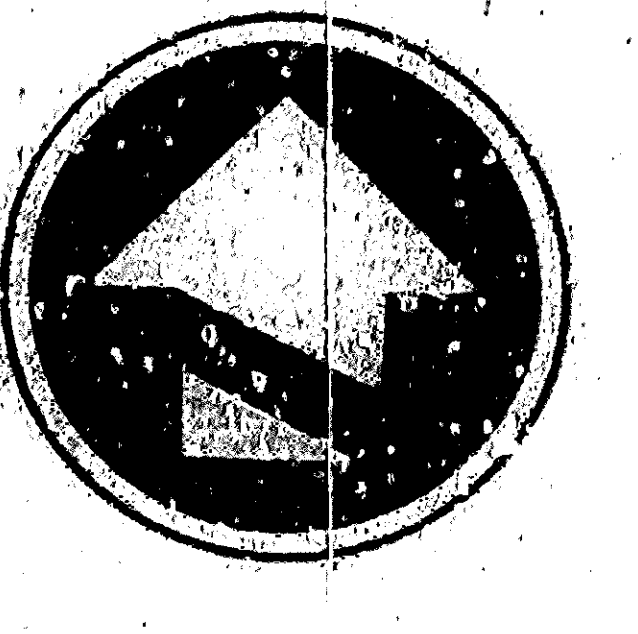
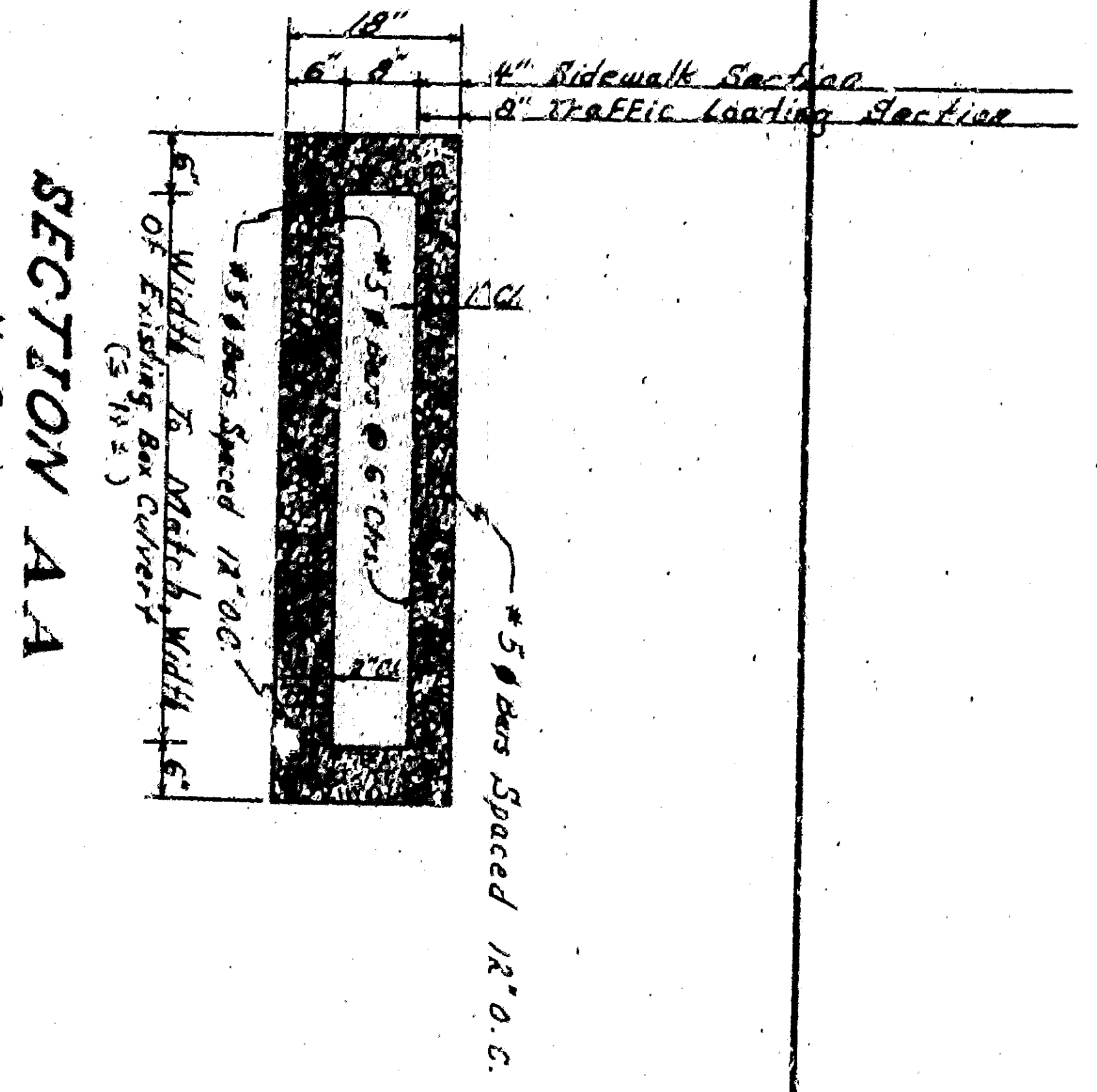
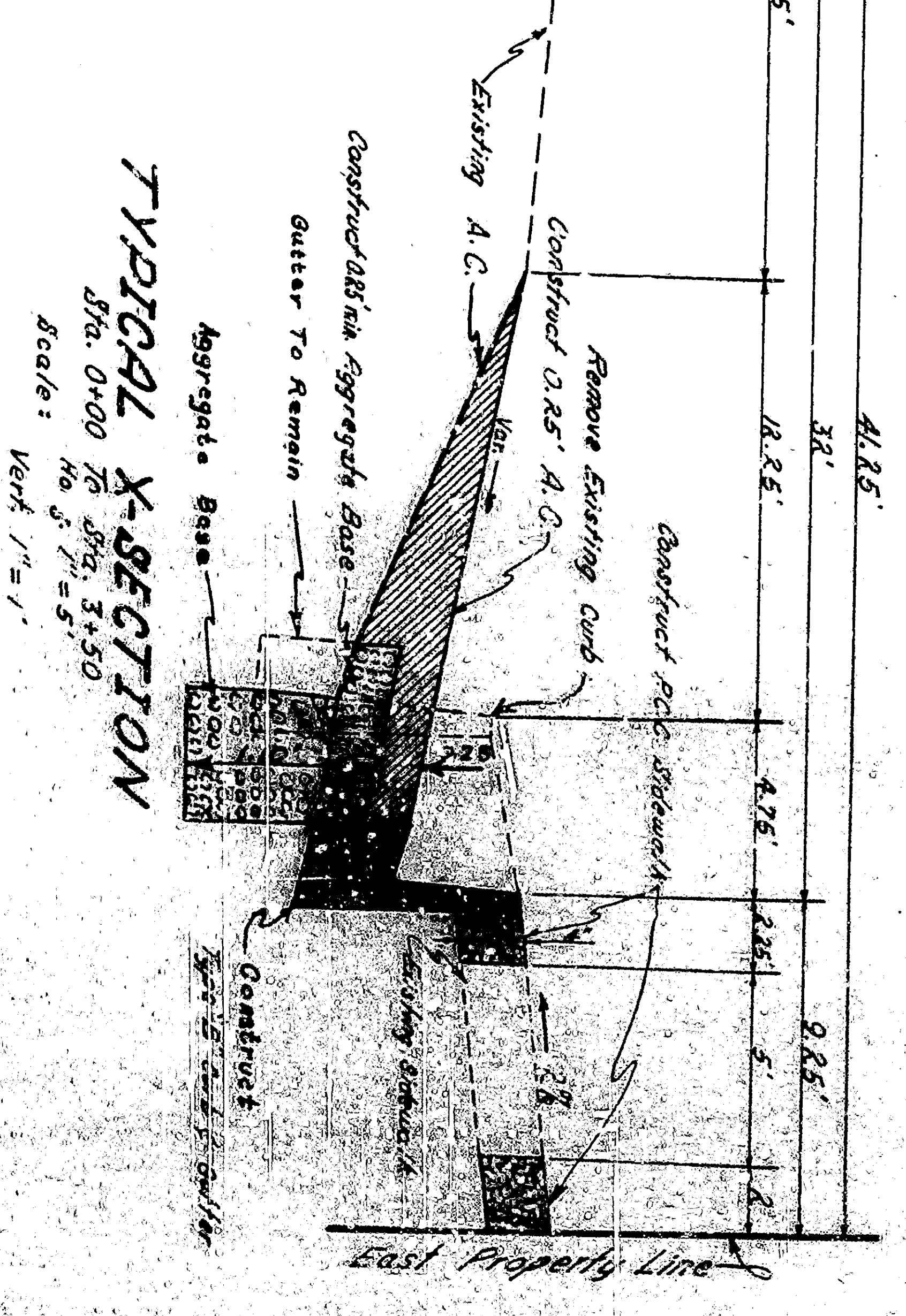
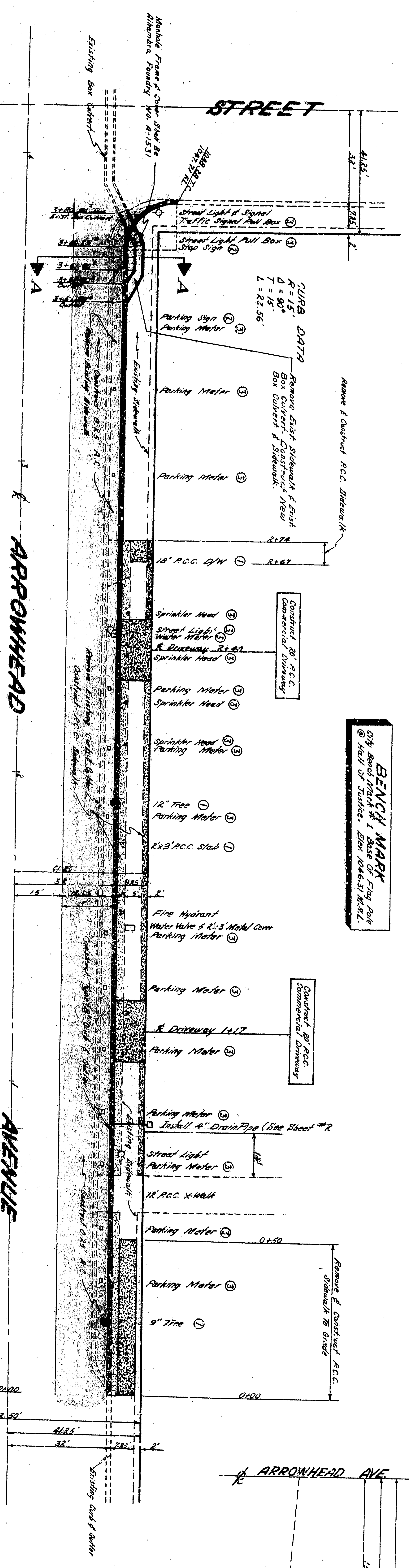
APPROVED:	3-2-14	1944
DRAWING NO.	3073	
SHEET 1 OF 3		
CITY OF SAN BERNARDINO		
DEPARTMENT OF ENGINEERING		
ENGINEER	J. W. BARNETT	
DESIGNED BY	J. W. BARNETT	
CHECKED BY	T. B. BARNETT	
RECOMMENDED BY	T. B. BARNETT	
DATE	3-2-14	

**CITY OF SAN BERNARDINO**  
 DEPARTMENT OF ENGINEERING  
 ENGINEER: J. W. BARNETT  
 DESIGNED BY: J. W. BARNETT  
 CHECKED BY: T. B. BARNETT  
 RECOMMENDED BY: T. B. BARNETT  
 DATE: 3-2-14

ARROWHEAD AVENUE  
 EAST SIDE ARROWHEAD AVENUE FROM  
 FIFTH STREET TO A POINT 415' SOUTH



- GENERAL NOTES**
- All work shall be done in accordance with the specifications of the City of San Bernardino.
  - It is the responsibility of the contractor to verify all field data and conditions before starting work.
  - Obstructions (pipes, etc.) shall be shown by appropriate symbols.
  - It is required that the contractor maintain a constant communication with the engineer.
  - It is required that the contractor submit a detailed schedule of work to the engineer.
  - It is required that the contractor submit a detailed estimate of the cost of the work.
  - It is required that the contractor submit a detailed plan of the work.
  - It is required that the contractor submit a detailed report of the work.
  - It is required that the contractor submit a detailed certificate of completion.
  - It is required that the contractor submit a detailed bill of materials.
  - It is required that the contractor submit a detailed list of subcontractors.
  - It is required that the contractor submit a detailed list of suppliers.
  - It is required that the contractor submit a detailed list of equipment.
  - It is required that the contractor submit a detailed list of labor.
  - It is required that the contractor submit a detailed list of materials.
  - It is required that the contractor submit a detailed list of tools.
  - It is required that the contractor submit a detailed list of other resources.



APPROVED:	3-2-14	1944
DRAWING NO.	3073	
SHEET 1 OF 3		
CITY OF SAN BERNARDINO		
DEPARTMENT OF ENGINEERING		
ENGINEER	W. H. BROWN	
DESIGNED BY	W. H. BROWN	
CHECKED BY	W. H. BROWN	
DATE	3-2-14	
PROJECT	CROSS, CURB, PARKING METER & SIGNAL	
LOCATION	EAST SIDE ARROWHEAD AVENUE FROM FIFTH STREET TO A POINT 415' SOUTH	